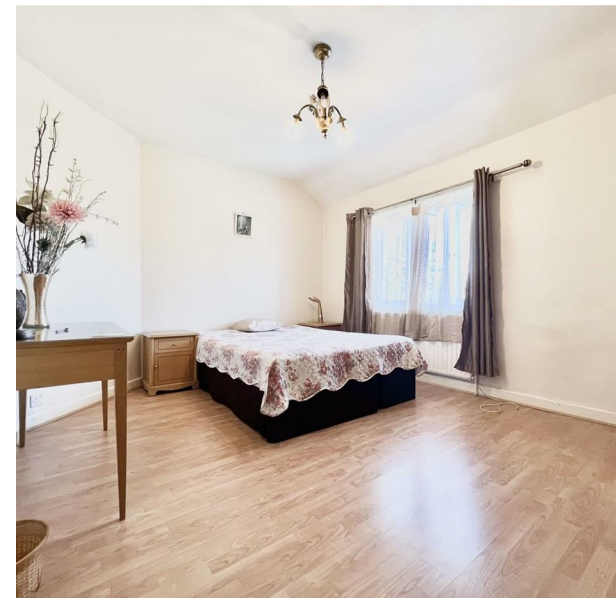


213 South Countess, London, Greater London, E17 5JT
£2,225 Per Month

COMPLETION
SALES & LETTINGS



213 South Countess, London, Greater London, E17 5JT

£2,225 Per Month

Council Tax Band: C

Nestled in the vibrant area of Walthamstow, this charming Victorian terraced house on South Countess Road offers a delightful living experience. Available to let at £2,225 per calendar month, this property is perfect for families or professionals seeking a comfortable and spacious home.

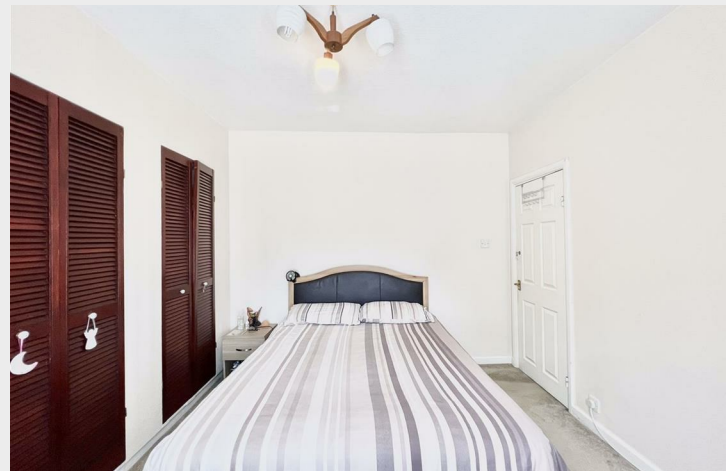
The house features three well-proportioned bedrooms, providing ample space for relaxation and rest. The single reception room is inviting and serves as a perfect gathering space for family and friends. The property also includes a bathroom, ensuring convenience for all residents.

With its Victorian architecture, this home boasts character and charm, making it a unique find in the bustling Walthamstow area. The location is ideal, with easy access to local amenities, parks, and excellent transport links, allowing for a seamless commute to central London and beyond.

This property presents a wonderful opportunity to enjoy the best of Walthamstow living in a comfortable and stylish environment. Do not miss the chance to make this lovely house your new home.



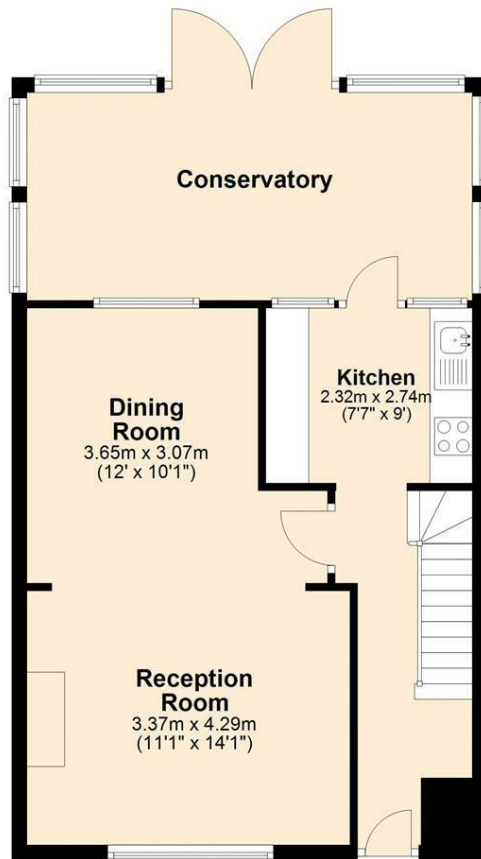






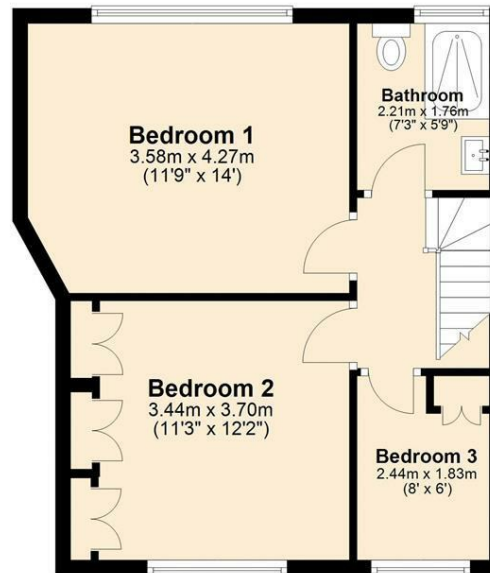
Ground Floor

Approx. 58.9 sq. metres (634.0 sq. feet)



First Floor

Approx. 41.4 sq. metres (446.1 sq. feet)



Total area: approx. 100.3 sq. metres (1080.1 sq. feet)

337 Forest Road

London

E17 5JR

02085277007

enquiries@completion.co.uk

completion.co.uk

Energy Efficiency Rating		
	Current	Potential
Very energy efficient - lower running costs		
(92 plus) A		88
(81-91) B		
(69-80) C		
(55-68) D	66	
(39-54) E		
(21-38) F		
(1-20) G		
Not energy efficient - higher running costs		
England & Wales		EU Directive 2002/91/EC